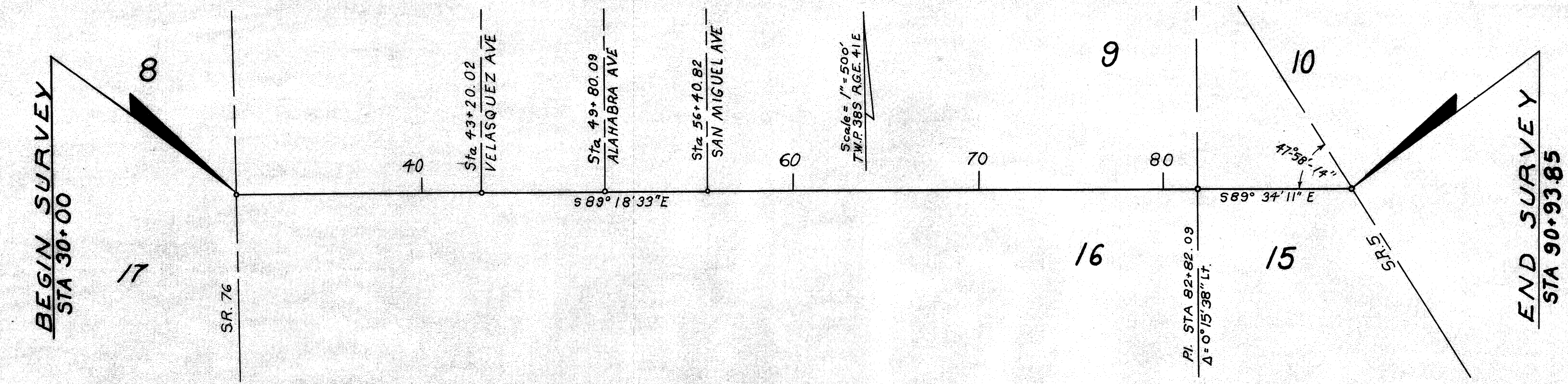


File # 198351 5-99

FILED FOR RECORD
MARTIN COUNTY, FLA.

1973 AUG 10 PM 3:31

LOUISE V. ISAACS
CLERK OF CIRCUIT COURT



I, Tom Webb, Jr, as Director of Administration of the State of Florida Department of Transportation, do hereby certify that this map is the Official Map of Location and Survey of a portion of Section 89512 in Martin County, Florida Said Portion of Section 89512 extending from State Road 76 Easterly along Monterey Road to State Road 5.

Prepared and adopted by the State of Florida Department of Transportation under provisions of Section 335.02, Florida Statutes of 1955.

Tom Webb Jr
Director of Administration
State of Florida Department of Transportation

Attest: Carolyn Scavali
Executive Secretary

Approved: Thomas C. Russ
Engineer of Rights of Way
Date: 21 1973

Filed for record in the Office of the Clerk of the Circuit Court for the County of Martin State of Florida, in Map Book 5 Page 99 on the 10th day of August A.D. 1973.

Louise V. Isaacs - By: Asst. Clerk
Clerk of the Circuit Court, De Martin County, Florida
Martin Co K.W.G.